



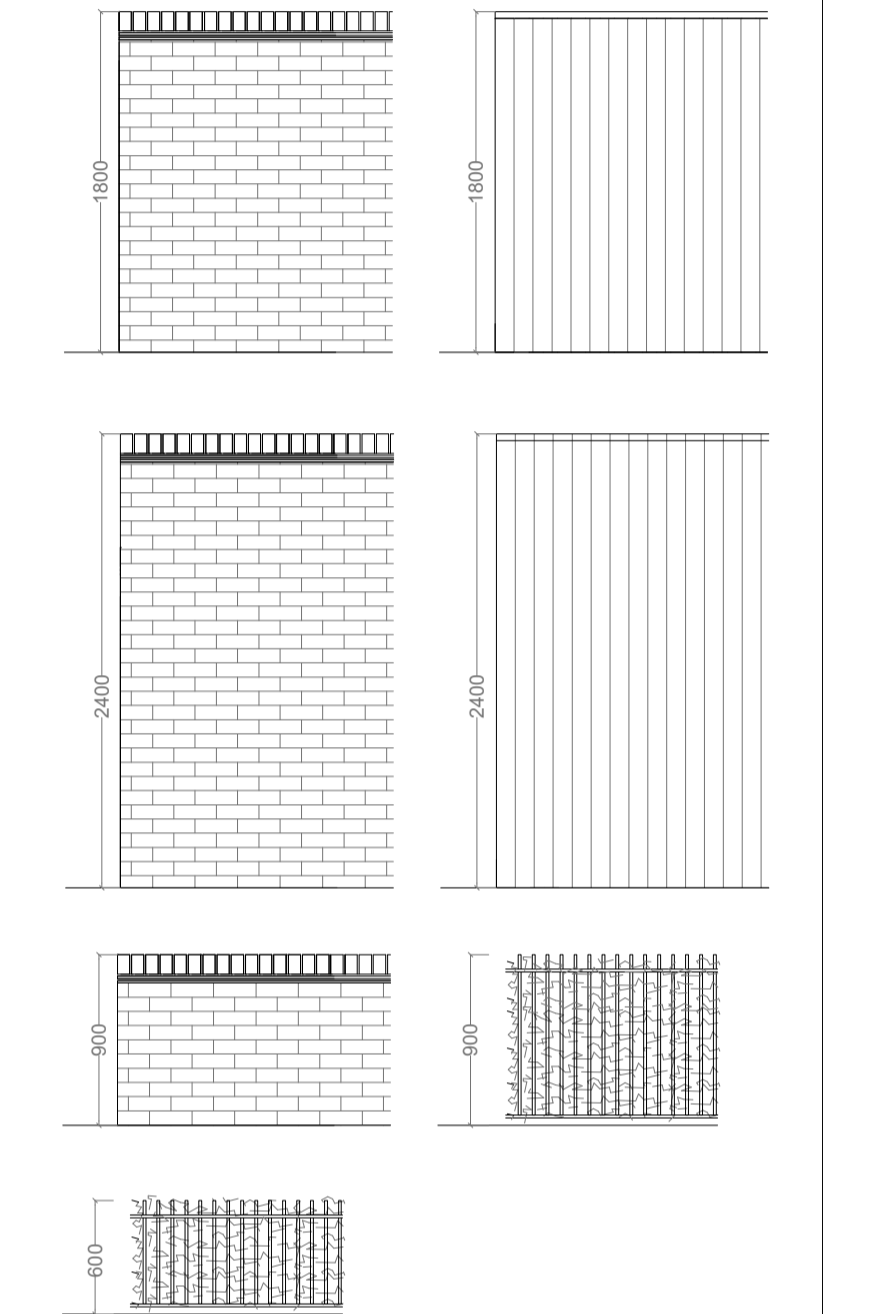
© this drawing and the building works depicted are the copyright of not be reproduced or amended except by written permission. no liability will be accepted for amendments made by other persons.

all dimensions to be checked on site and architect notified of any discrepancies prior to commencement. do not scale.

any and all elements relating to the fire safety of the building will require separate confirmation and approval by a fully accredited fire engineering consultant who has to be appointed by the Client.

notes:
 This drawing is reflective of PL100 Rev L Site Layout Plan
 Please refer to landscape proposals for details of soft boundary treatments.
 Where indicated, acoustic barriers/garden fences shall be imperforate (solid) and have a minimum mass per unit area of at least 10kg/m², as specified within the Noise Impact Assessment May 2024 Revision 3, produced by Stantec.

- Key:
- 1800mm Brick Wall
 - 1800mm Close Board Timber Fence
 - 900mm Brick Wall
 - 900mm Vertical Railing
 - 600mm Vertical Railing
 - 2400mm Acoustic Boundary Wall
 - 2400mm Acoustic Fencing
 - Indicative Retaining Wall Position
 - Indicative Gravel Board Retaining Position



Retaining features boundaries (Refer to Engineer's drawings for details and accurate locations)

H	09.06.25	Amended to reflect Rev L site layout plan.	JSW	JSW
G	12.05.25	Amended to reflect Rev K site layout plan.	JMW	JSW
F	13.02.25	Amended to reflect Rev J site layout plan.	JMH	JSW
E	01.11.24	Amended to reflect Rev H site layout plan.	JSW	JSW
D	16.05.24	Amended to reflect Rev G site layout plan.	JSW	JSW
C	05.01.24	Red line boundary updated in accordance with landscape drawing 002 Rev F.	JSW	JSW
B	01.11.23	Amended to reflect Rev D site layout plan.	ISG	JSW
A	22.06.23	Red line boundary amended.	JSW	DZ
rev:	date:	comment(s):	name:	check:



ARCHITECTS.
 URBAN DESIGNERS.
 PROJECT MANAGERS.
 LANDSCAPE ARCHITECTS.
 WE ARE IDP.

status: **Planning** RIBA Stage: 3

client: **Countryside Partnerships**

job: **Windmill View, Upper Lighthorne**

title: **Boundary Treatments Plan**

drawn: **JSW** date: **02.06.2023**

checked: **DZ** scale @ a1: **1:1000**

job no: **C5640** drg no: **PL111 Rev H**

IDP GROUP 27 SPON STREET COVENTRY CV1 3BA
 T: +44 (0)24 7652 7600 E: info@idpgroup.com
 www.wearidp.com

